

Supernatural Grass

SO REAL IT'S SCARY

YOUR DIY BROCHURE



Supernatural
Grass

DIY Supernatural Grass Installation Guide

Supernatural Grass recommends using an experienced installer for all synthetic grass installations. Sporting grounds, tennis courts, multi purpose areas and schools are installed with very specific requirements to comply with insurance regulations and safety standards and should not be attempted by anyone without specific knowledge and experience. Domestic and landscaping applications are less critical however Supernatural Grass still recommends using an experience installer.

The following is a guide only and to be used as a reference only for people with construction or earthwork experience. Supernatural Grass will not be liable for any damage or errors caused by the installation of Synthetic grass.

Step 1 - Mark Out

Use a rope or garden hose to mark out the area to be covered with Supernatural Grass™. Use an earth paint or similar to paint your border. It is worth noting at this point that Supernatural Grass™ is supplied in 3.71 meter widths and your area plan should be marked out to minimise wastage.

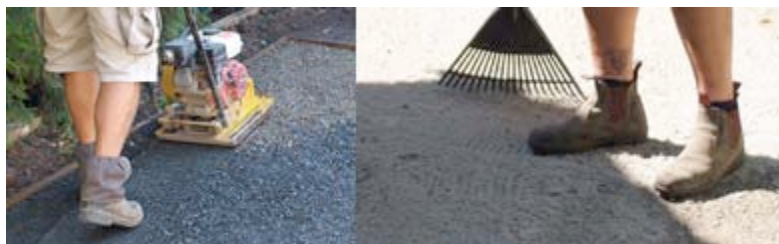
Step 2 - Sub Base

Strip out all natural grass (living or dead) as well as all vegetation within the area to be laid with Supernatural Grass™. Excavate the ground to a depth of 75mm below the desired finished level of the Supernatural Grass™. Supernatural Grass recommends treating the area with a herbicide such as round up or similar to prevent vegetation growth under your Supernatural Grass™. Please refer to the herbicide manufacturers instructions on handling these potentially dangerous chemicals safely. You may be required to leave the area for a period of time dependant on the herbicide chosen.



Step 3 - Sub Base Fill

Fill your sub base area with crushed rock or good quality compactible sand to a depth of 75mm. Spread the base evenly to create a surface that is as level as possible and compact the base with plate compactor. Supernatural Grass recommends compacting the area at least twice with a medium watering between each compaction. You may need to refill the area dependant on your finished height requirements once the first round of compacting is complete. Once compacting is finished and very hard, spread approximately 10-15mm of crusher dust over the base and compact. A fine layer of sand can be used as a final layer to create a perfectly smooth sub base if necessary. **Check surface for depressions.** Any depression areas 10mm-20mm or deeper should be filled in and re-leveled. Although the grass also drains vertically through the drainage holes that are manufactured in the grass, it is still advisable to give the sub-base a slight slope, to avoid any pools of water (slope away from buildings).



Step 4 - Laying the Grass

Lay your Supernatural Grass™ over the sub base according to your measurement plan and allow the garden side ends to overlap for later trimming. Allow the Supernatural Grass™ to relax for a few hours, this should remove any wrinkles caused by rolling of the grass. Make cuts around trees and obstacles and get all the Supernatural Grass™ laid into it correct final position ready for gluing the seams.

Roll out grass. Position the grass where it goes, be accurate (so you don't cut off grass you actually need). Note: Try to avoid dragging the grass as this may dislodge some crushed rock or sand



Step 5 - Securing Edges

After your Supernatural Grass is cut to size and sitting in position long flat head nails or 'u' shaped pegs can be used to secure the edges of the grass. One nail or peg every 30cm is recommended.



Need Help? Contact our friendly Supernatural Grass staff on **1300 727 678**



Step 6 - Gluing Seams

Make sure your Supernatural Grass™ is sitting in the correct position, and then roll back the edges to be glued together. Place a jointing tape directly under the seam position and exactly in the middle of the seam. Pour outdoor synthetic grass glue onto the joint tape and spread evenly over the tape with a notched trowel. Place two edges of Supernatural Grass™ together over the glued tape and push down firmly. It is very important that the two edges of the Supernatural Grass™ are glued as closely together as possible to ensure that the seam is not visible and ensure you match the seam on each joining piece.

Note: The pattern of grass stitching on the under side must run in the same direction before the two pieces are adhered. Both sides of the grass at the seam must be pulled back in order to install the seam tape.



Step 7 - Brushing and Infill

Rubber infill material should be laid evenly on the Supernatural Grass™, use the Supernatural Grass product range page to guide you of the correct infill amounts per square meter of sand and rubber granules to use for each product. Most use sand infill, as it is the least expensive compared to rubber infill. Of course rubber is more shock absorbent than sand, so choose what you can afford and prefer, although it is strongly advisable to have at least the top half in rubber infill. This acts as insulation & also deters weeds from sprouting in the sand. You want to calculate the amount of infill in advance, as you will want to leave around 15mm of grass blade exposed. As a general rule of thumb, approximately 10kg of kiln dried Supernatural Grass sand per square meter of grass, equals around 10mm of infill height. Then finally add a crumb rubber infill using Supernatural Grass Rubber with approximately one 25 kg bag covering 2-3 sq metre for every 10mm of infill height. Spread the infill in several passes. As you spread the infill you should make one entire pass on the surface then sweep it down into the fibres, repeating the process until all of your infill has been spread evenly. Once the rubber granules are spread evenly over the Supernatural Grass™ spread the sand over the top of the rubber evenly, Use a plastic garden rake to further even out the infill. Brush in the infill with a stiff bristled broom or mechanical power broom, allowing the infill to fall to the base of the Supernatural Grass™. Over time the rubber will settle further to the base of the Supernatural Grass™ and become less visible. Further infill may need to be reviewed after several years of use or depending on traffic on grass. Your Supernatural Grass™ is now ready to use!!



Finished Product

You may need to broom the grass occasionally dependant on usage and traffic and any leaves and debris can be removed either manually or with a leaf blower.



Notes

You may use 100% sand if you would prefer not to use rubber.

- The advantages of using Rubber
- Rubber Creates soft fall and is less abrasive
- Type of Rubber and Sand to use:
- 1mm – 2mm size Rubber granules are recommended.
- Dried sand must be used. Best grading is a kiln dried AFS 40 Grade Sand.



Need Help? Contact our friendly Supernatural Grass staff on **1300 727 678**

Optional Edging. Depending on your yard, you may want to install some type of edging material around your new lawn. A large range of Clay, Masonry and Natural Stone pavers, garden edging borders and retaining wall products are available from Melbourne Brick stores throughout Melbourne which will be ideal for edging your new grassed area.

Maintenance Guidelines

Routine maintenance generally includes keeping the surface clean of debris, especially that which may decay into the infill, and occasionally sweeping the fibers up to revitalize the appearance of the lawn.

Rain is your best cleanser. Rainfall gently cleans the grass fibers of dust, pollen and airborne pollutants in way that is difficult to duplicate in any other fashion. In areas where rainfall is scarce—or during prolonged periods of drought—an occasional water flush is beneficial to soak and thus cleanse the grass system. This procedure is recommended for all grass systems.

Here are some additional tips:

- Do not use any tools that may damage the field and do not use solvents like acetone or cleaning materials containing alcohol.
- Pay special attention to the most heavily used areas. Keep extra sand or rubber infill as after a minor settling period, you may wish to fill-in any minor "low spots". If you encounter a low spot, take a bucket of infill, locate the spot and apply several thin layers of infill to the area and brush into the fibers with a stiff street broom or small hand held fiber scrub brush (such as is used to hand scrub floors). Brush in several directions.
- Every loose foreign object, no matter how small, can damage your Artificial grass by abrading the fibres and/or contaminating the fill. Remove all leaves, twigs, paper and any other waste items on a regular basis.
- To keep the infill from compacting and to limit the fibers from "matting down", brush your Artificial grass on a regular basis. Always brush the Artificial grass in opposite directions, as continuous brushing in one single direction will produce unacceptable pile lean.
- In case of seams opening, it should be repaired soon as quickly as possible to prevent the situation from deteriorating.
- Snow removal: Generally snow and ice should be left to melt and drain off the system without assistance. At times, however, it may be desirable to remove snow or ice. If you elect to plow the snow, leave a layer of snow of 1 inch as to protect your Artificial grass from mechanical damage. The final layer of snow can be removed by brushing.
- Do not park vehicles on the Artificial grass. You also do not want direct, hot engine exhaust to be discharged onto the Artificial grass for extended periods.
- Prevent lubricating oil, grease, transmission fluids, etc., from dripping or spilling on your Artificial grass surface during sweepings. Such spills can discolor the Artificial grass. Battery acid and other such fluids should not be allowed on the Artificial grass. Never change or add fluids to maintenance equipment while on the Artificial grass surface.
- The Artificial grass fibers are highly stain resistant because most stains are moisture borne and the polyolefin-based fibers tend not to absorb moisture. Hence, most stains on Artificial grass are not true stains but rather residues of foreign matter that must be promptly and thoroughly removed. Most stains can be removed with water or soap and water. The first rule is promptness. It is much easier to clean up a fresh spill before it has time to dry and harden. Remove any solid or putty-like deposit promptly using a dull knife or spatula-like tool.
- Neither long-term static load of more than 2 psi, nor any transient or dynamic load of more than 35 psi should be allowed on the surface. The loading of a pneumatic-tired vehicle is approximately equal to the air pressure in its tires. Hence, it is good practice to eliminate any unnecessary long-term parking and loading and to keep the necessary ones as low and brief as possible.
- Enforce a smoke-free environment, if possible, and discourage the use of fireworks, fires, and tobacco products including chewing gum.



Need Help? Contact our friendly Supernatural Grass staff on **1300 727 678**

Supernatural Grass

SO REAL IT'S SCARY

Need help?

Contact our friendly staff
at supernatural grass

on 1300 727 678

